

CONTINUING MEDICAL EDUCATION ΣΥΝΕΧΙΖΟΜΕΝΗ ΙΑΤΡΙΚΗ ΕΚΠΑΙΔΕΥΣΗ

Hematology-Cell Morphology – Case 12

The presence of these morphological features of erythroid series are characterized by the megaloblastoid appearance of cells, containing two or more nuclei (multinuclear erythroblasts), the existence of intracytoplasmic or nuclei bridges, of giant erythroblasts or erythroblasts with other bizarre perturbation and shapes of erythroblastic nuclei and disturbances of hemoglobinization (figures 1 to 16). They are present mainly in megaloblastic anemias, but may be present in hemolytic anemias, erythroleukemia, in myelophthistic anemias, in sideroblastic anemia, in alcoholism, following different drugs therapy reacting with DNA metabolism, in hepatic insufficiency, in hereditary dyserythropoietic anemias, in myelodysplastic syndromes or bone marrow infiltration by malignant cells.

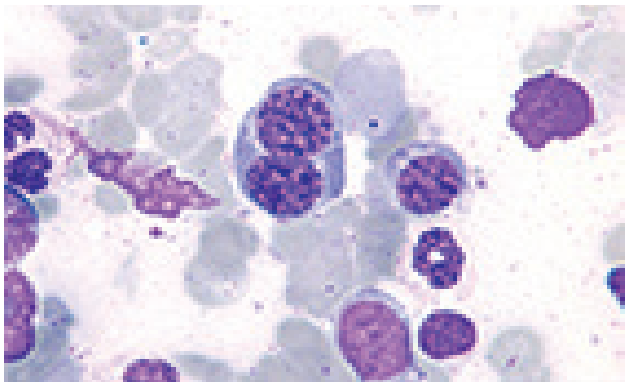


Figure 1

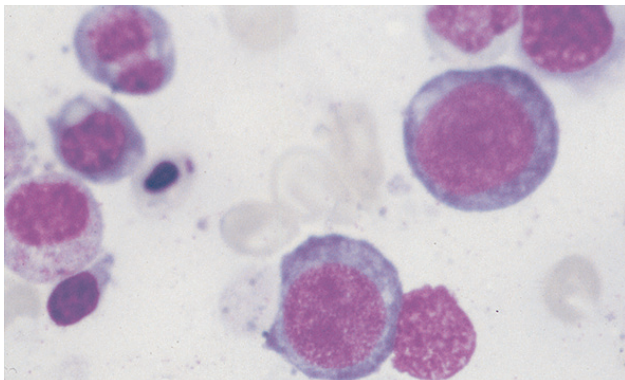


Figure 2

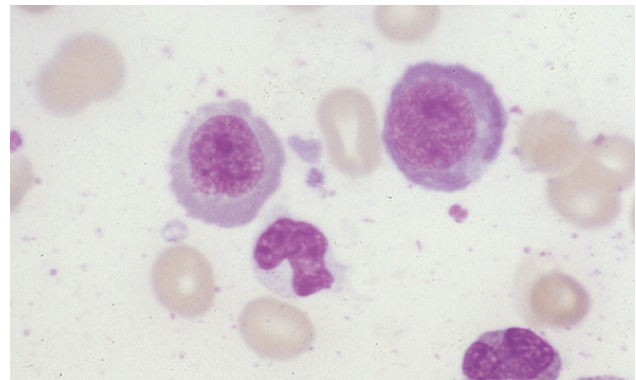


Figure 3

ARCHIVES OF HELLENIC MEDICINE 2021, 38(5):718–720
ΑΡΧΕΙΑ ΕΛΛΗΝΙΚΗΣ ΙΑΤΡΙΚΗΣ 2021, 38(5):718–720

J.V. Asimakopoulos,
L. Papageorgiou,
I. Vasilopoulos,
E. Konstantinou,
D. Galopoulos,
M.P. Arapaki,
C. Chatzidimitriou,
M. Belia,
A. Machairas,
J. Drandakis,
A. Kopsaftopoulou,
A. Piperidou,
A. Georgopoulou,
A. Karapaschalidis,
A. Alexandropoulos,
M.A. Lefaki,
P. Petsa,
F. Panitsas,
K. Benekou,
E. Sinni,
E. Plata,
M.P. Siakantaris,
P. Tsafaridis,
T. Vassilakopoulos,
M.K. Angelopoulou,
K. Konstantopoulos,
J. Meletis

Hematology Department and Bone Marrow Transplantation Unit, National and Kapodistrian University of Athens, School of Medicine, "Laiko" General Hospital, Athens, Greece

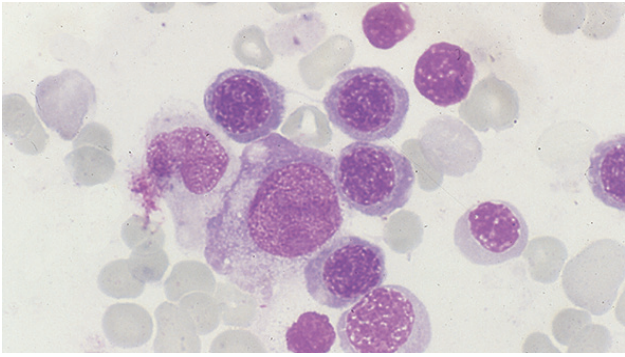


Figure 4

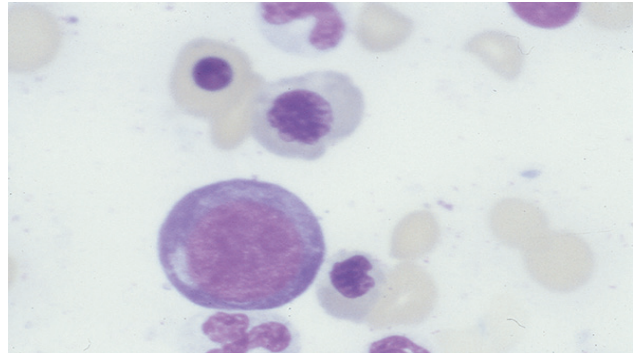


Figure 8

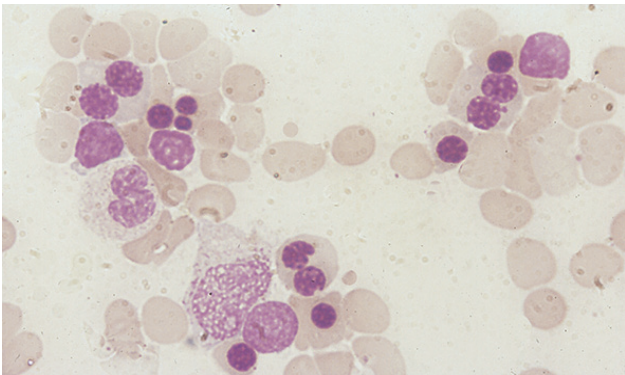


Figure 5

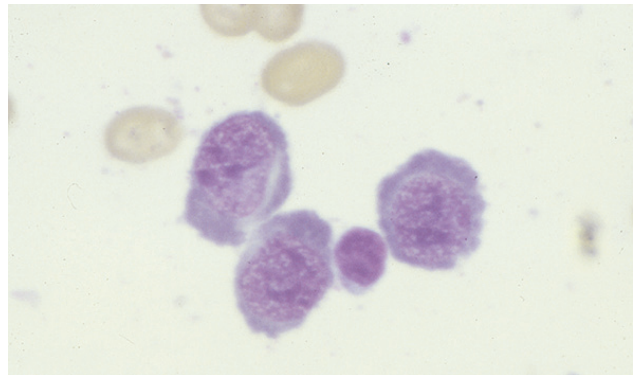


Figure 9

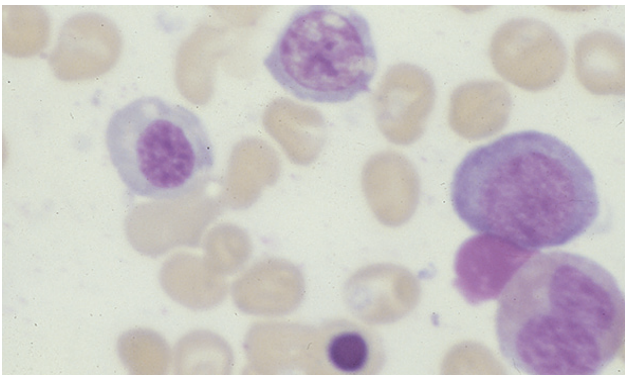


Figure 6

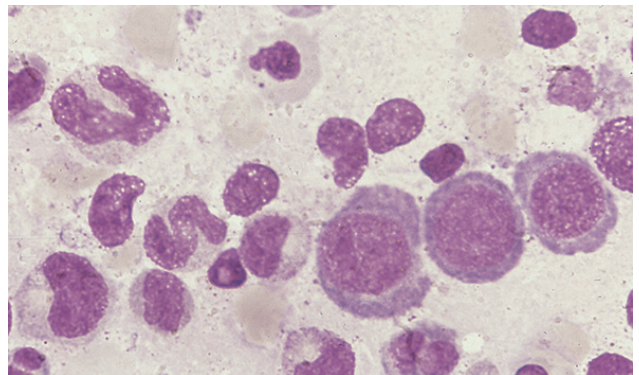


Figure 10

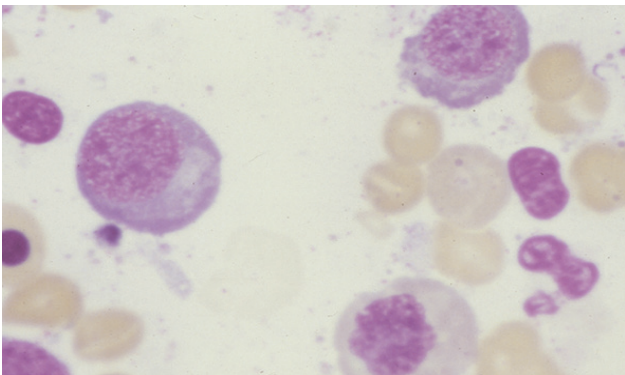


Figure 7

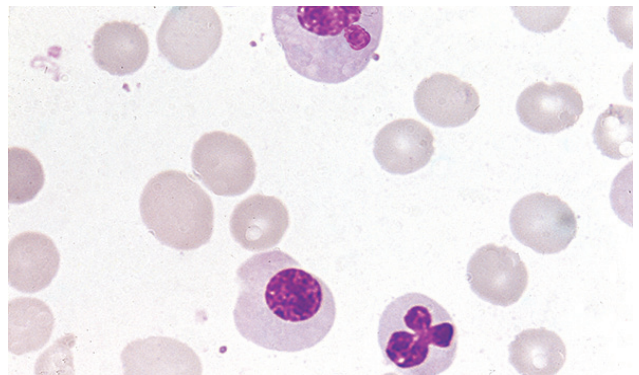


Figure 11

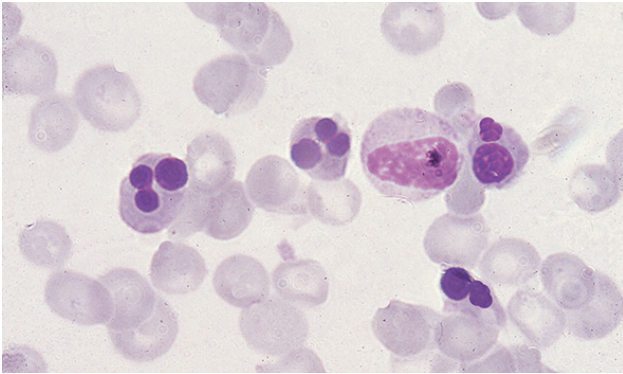


Figure 12

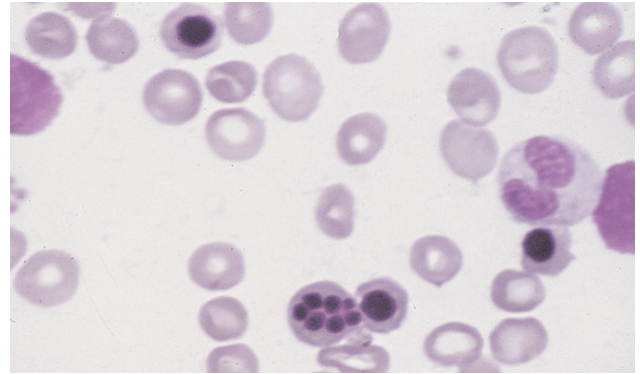


Figure 15

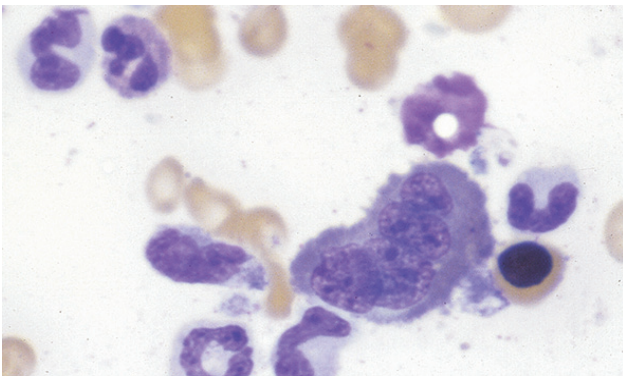


Figure 13

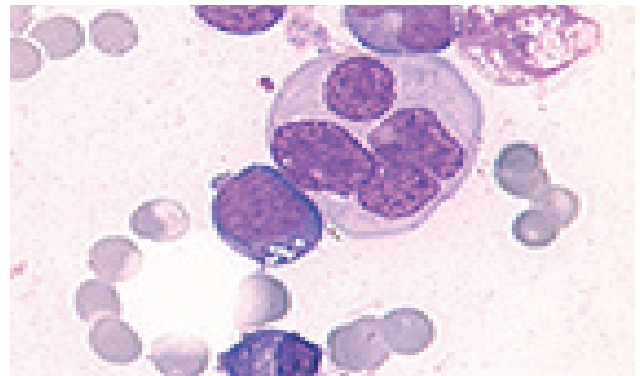


Figure 16

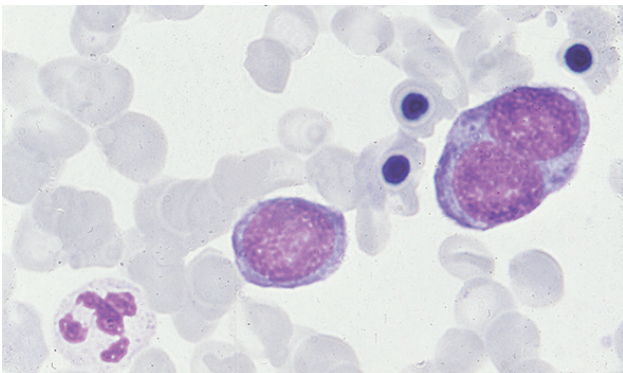


Figure 14

References

1. MELETIS J. *Atlas of hematology*. 3rd ed. Nireas Publ Inc, Athens, 2009:130, 142, 171, 257, 260–262, 396–398

Corresponding author:

J. Meletis, Hematology Department and Bone Marrow Transplantation Unit, National and Kapodistrian University of Athens, School of Medicine, "Laiko" General Hospital, Athens, Greece
e-mail: imeletis@med.uoa.gr